

INTRO TO I-HOUSE FLOOR PLANS

International House is comprised of two separate buildings, I-House South and I-House North, which have two connecting points highlighted below. This cross-section shows I-House South and I-House North from Claremont Avenue (easternmost side of the two buildings).

SOUTH BUILDING A LEVEL

- 1) Claremont Front Desk
- 2) Corridor to North G-Level
- 3) Public Safety Office

SOUTH BUILDING B LEVEL

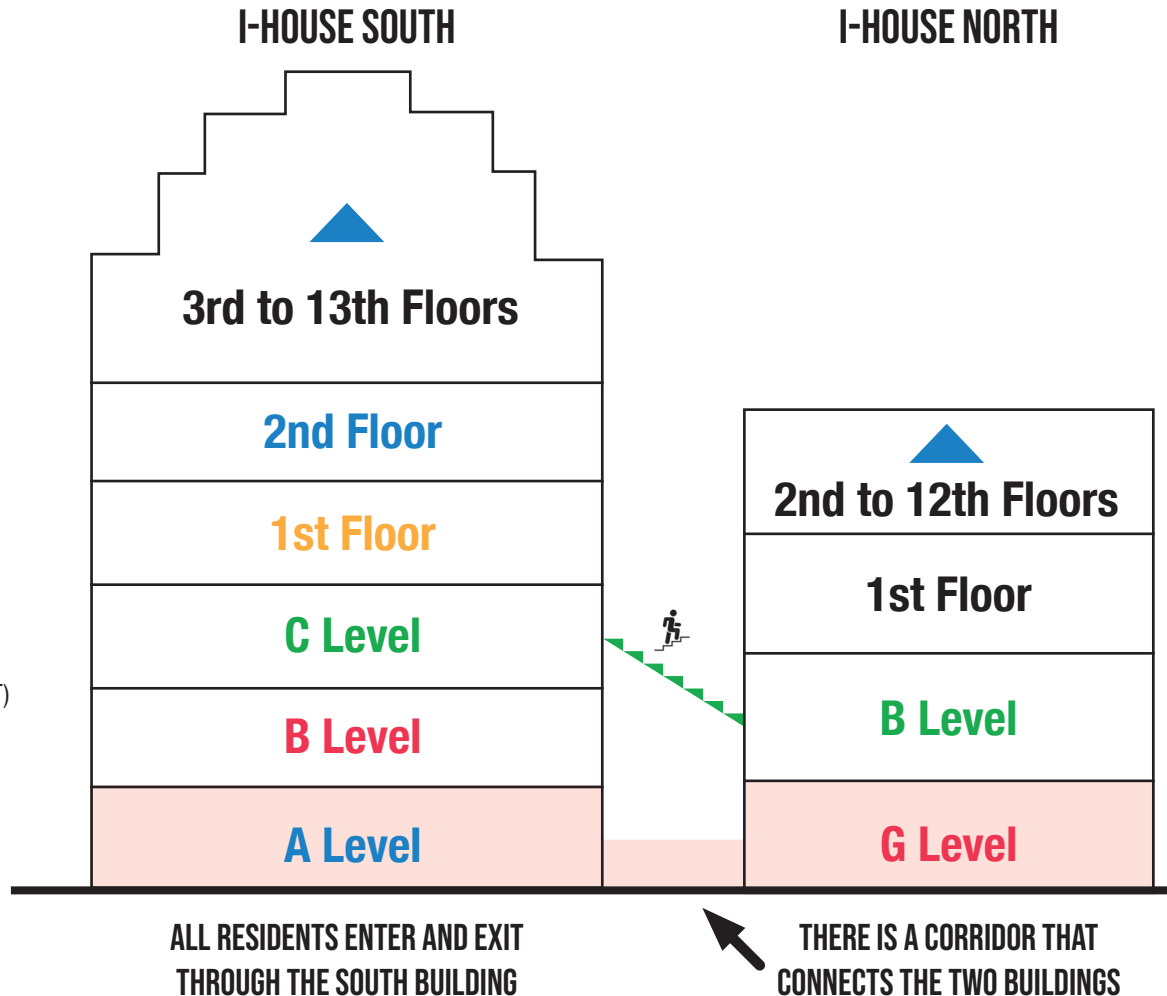
- 4) Mail Room
- 5) Laundry Room South
- 6) Bicycle Storage Room
- 7) Music Practice Rooms

SOUTH BUILDING C LEVEL

- 8) Study Center/Computer Lab
- 9) I-House Pub
- 10) Game Room / TV Lounge
- 11) Music Practice Rooms
- 12) Community Kitchen
- 13) HR Commons
- 14) Map Lounge
- 15) Cafeteria
- 16) Dining Hall
- 17) Corridor to North B Level
- 18) Information Technology Office (IT)

SOUTH BUILDING 1ST FLOOR

- 19) Main Lounge
- 20) Soros Room
- 21) President's Office
- 22) Admissions Office
- 23) Development, Alumni Relations & Communications Office (on Mezzanine Level)



- 24) Riverside Entrance/Exit
- 25) Bursar Office
- 26) Burns Foyer
- 27) Frohlich Gymnasium
- 28) Programs & Resident Life Office
- 29) Dodge Room
- 30) Abby O'Neill Patio

SOUTH BUILDING 2ND FLOOR

- 31) Hall of History
- 32) Davis Hall
- 33) Home Room

NORTH BUILDING G LEVEL

- 34) Corridor from South Building A Level

NORTH BUILDING B LEVEL

- 35) Corridor from South Building C Level
- 36) Frohlich Fitness Center
- 37) Laundry Room
- 38) Storage Cages
- 39) I-House Archives

ALL FLOORS/LEVELS

- East Elevators
- West Elevators
- Women's Restroom
- Men's Restroom
- Public Restrooms
- Stairs

DIRECTIONS TO I-HOUSE NORTH FROM I-HOUSE SOUTH

From the Claremont Lobby on the A Level, follow the passageway to I-House North (G Level). At the end of the passageway, take the elevators to your floor. The two buildings are also connected from the C Level of I-House South to the B Level of I-House North (shown in green).

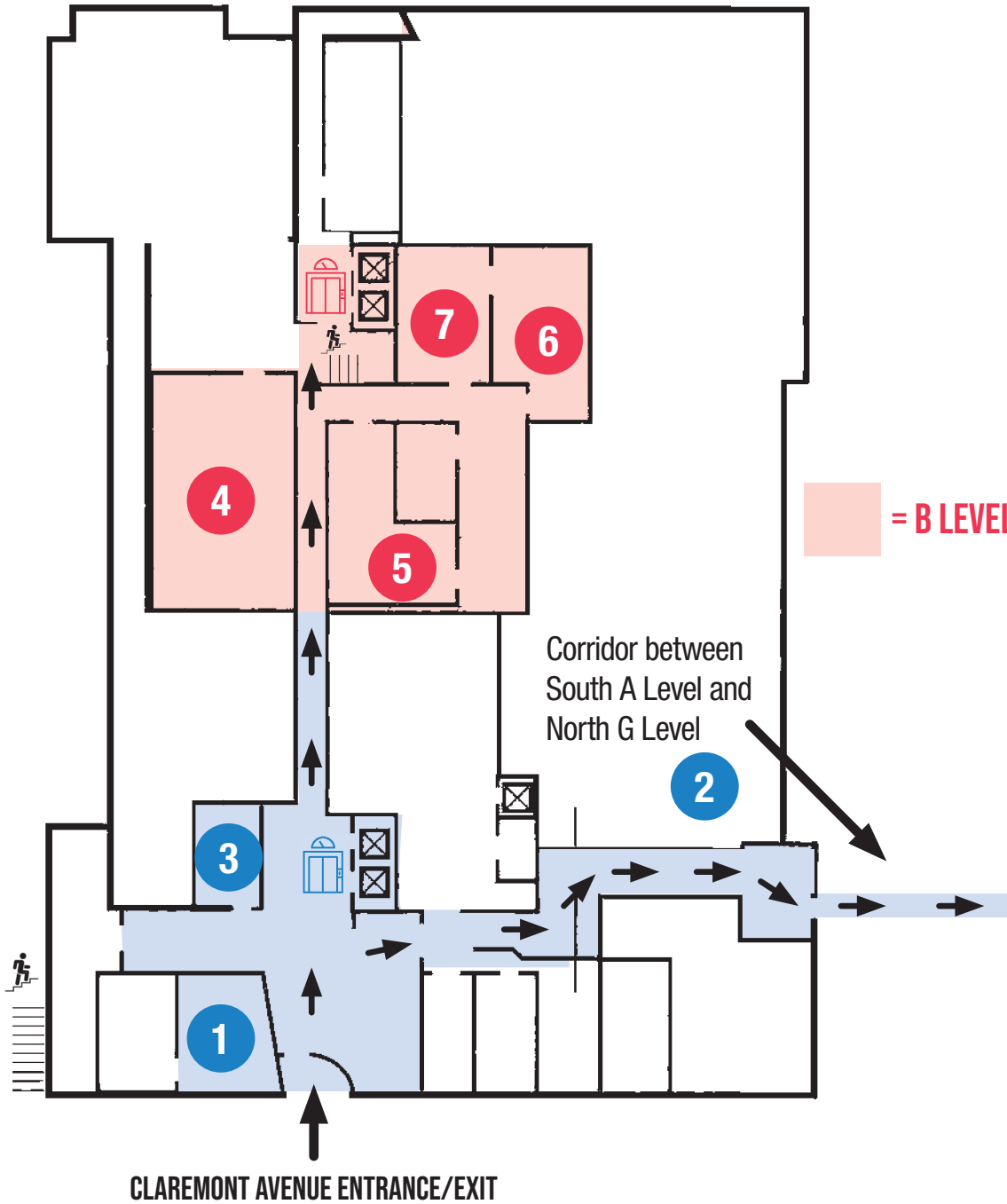
I-HOUSE SOUTH: A & B LEVELS

SOUTH BUILDING A LEVEL

- 1) Claremont Front Desk
- 2) Corridor to North G-Level
- 3) Public Safety Office
-  East Elevators
-  Stairs

SOUTH BUILDING B LEVEL





- 4) Mail Room
- 5) Laundry Room South
- 6) Bicycle Storage Room
- 7) Music Practice Rooms
-  West Elevators

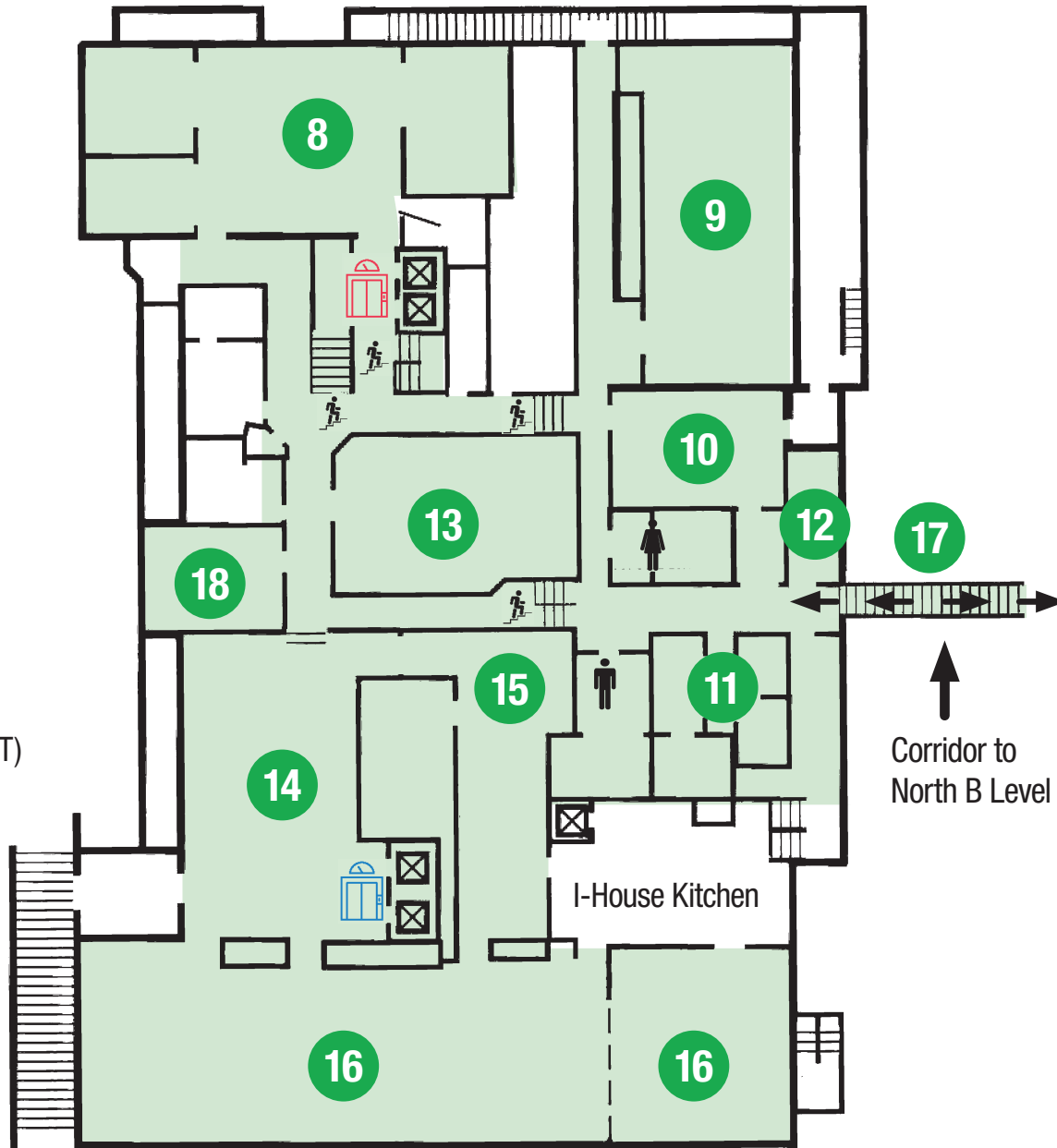


I-HOUSE SOUTH: C LEVEL

SOUTH BUILDING C LEVEL

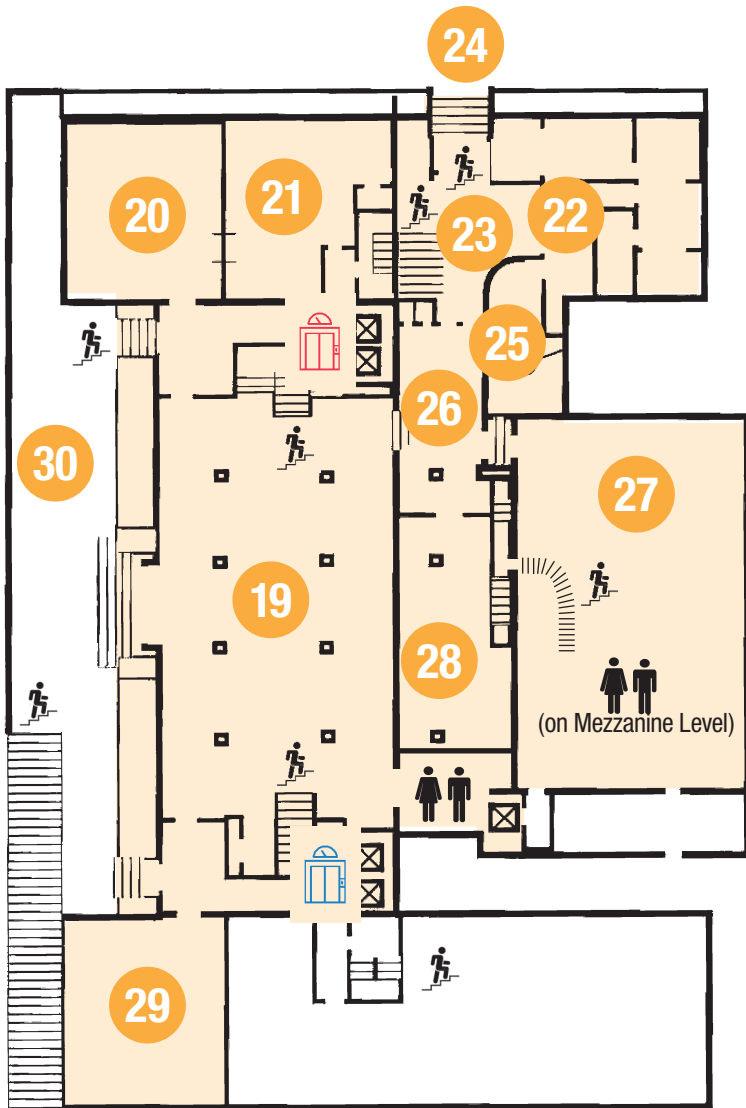
- 8) Study Center/Computer Lab
- 9) I-House Pub
- 10) Game Room / TV Lounge
- 11) Music Practice Rooms
- 12) Community Kitchen
- 13) HR Commons
- 14) Map Lounge
- 15) Cafeteria
- 16) Dining Hall
- 17) Corridor to North B Level
- 18) Information Technology Office (IT)

-  Women's Restroom
-  Men's Restroom
-  East Elevators
-  West Elevators
-  Stairs



I-HOUSE SOUTH: 1ST & 2ND FLOORS

1ST FLOOR



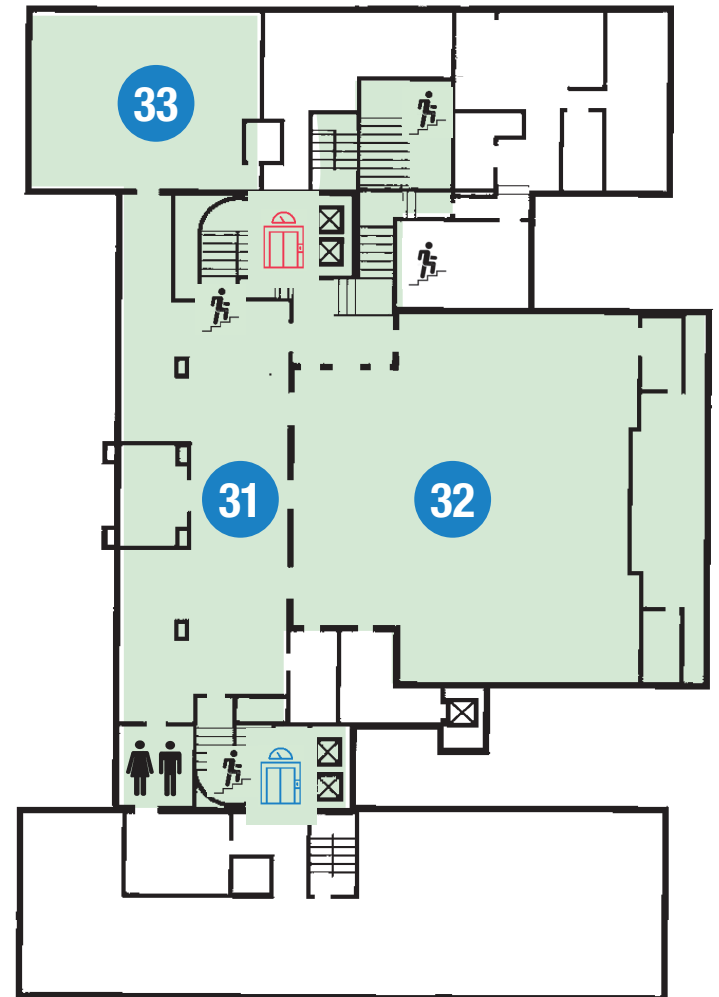
SOUTH BUILDING 1ST FLOOR

- 19) Main Lounge
- 20) Soros Room
- 21) President's Office
- 22) Admissions Office
- 23) Development, Alumni Relations & Communications Office (on Mezzanine Level)
- 24) Riverside Entrance/Exit
- 25) Bursar Office
- 26) Burns Foyer
- 27) Frohlich Gymnasium
- 28) Programs & Resident Life Office
- 29) Dodge Room
- 30) Abby O'Neill Patio
- Public Restrooms
- East Elevators
- West Elevators
- Stairs

SOUTH BUILDING 2ND FLOOR

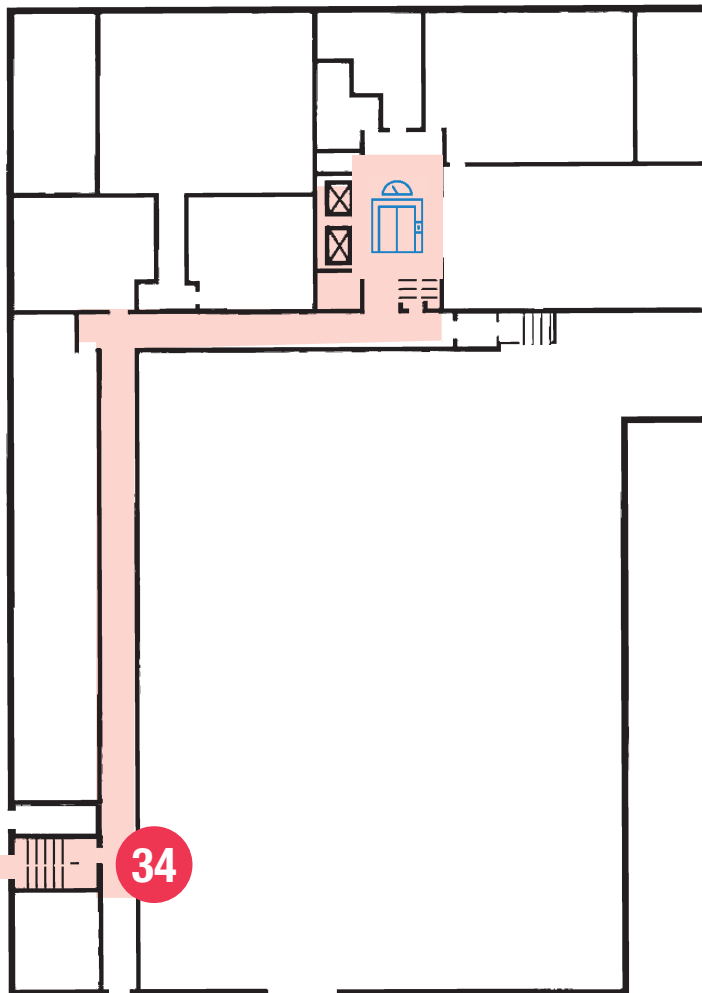
- 31) Hall of History
- 32) Davis Hall
- 33) Home Room
- East Elevators
- West Elevators
- Public Restrooms
- Stairs

2ND FLOOR



I-HOUSE NORTH: G & B LEVELS

G LEVEL



 = OPEN TO RESIDENTS

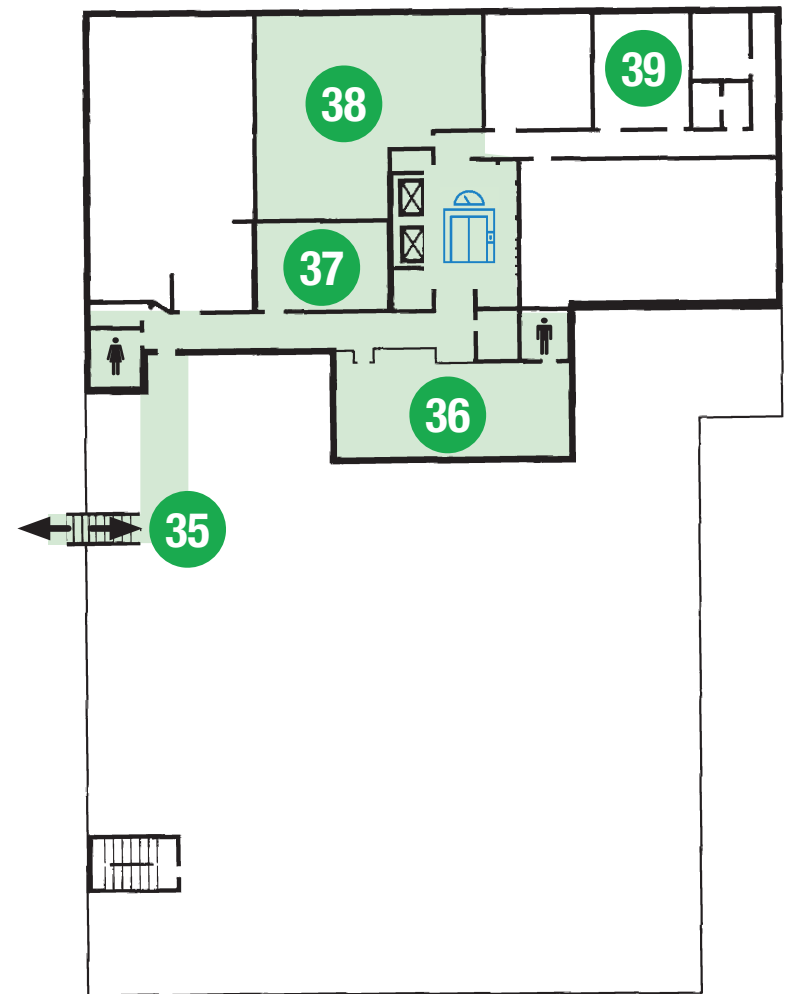
NORTH BUILDING G LEVEL

- 34) Corridor from South Building A Level
-  Elevators

NORTH BUILDING B LEVEL

- 35) Corridor from South Building C Level
- 36) Frohlich Fitness Center
- 37) Laundry Room
- 38) Storage Cages
- 39) I-House Archives
-  Elevators
-  Women's Restroom
-  Men's Restroom

B LEVEL



 = OPEN TO RESIDENTS